

# LinTronic

<http://www.lintronic.dk>

## TableTop series

Hardware Version 5

**Test of digital inputs/outputs  
RS232 communication  
IR transmission and reception**



# LinTronic

<http://www.lintronic.dk>

## Foreword

This test produce will help you determine whether the basic hardware of your TableTop product is working.

For further information on the hardware, please see the 'Technical Manual' available from the Support section on our web-site.

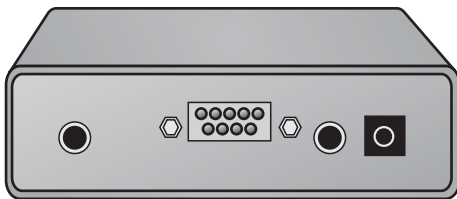
It is strongly recommended that you firmware update to latest version before testing.

# LinTronic

<http://www.lintronic.dk>

## TEST PROCEDURE

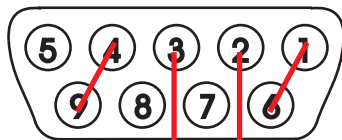
TableTop  
Transmitter or Converter



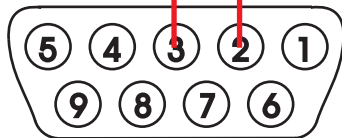
Create a test-plug connecting a DB09 male and a female connector as shown:

- Connect male pin 1 to male pin 6
- Connect male pin 4 to male pin 9
- Connect male pin 3 to female pin 3
- Connect male pin 2 to female pin 2

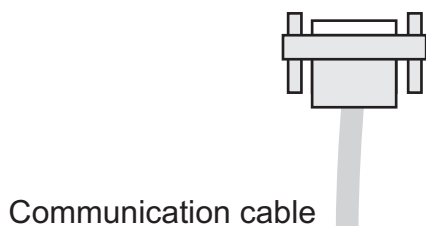
You do not need the TestAdaptor, but then errors will be reported on the Digital Inputs/Outputs.



DB09 MALE

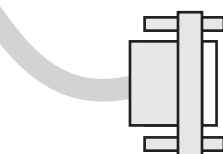


DB09 FEMALE



Communication cable

Start up the LINTRONIC SETUP program.



RS232 or USB

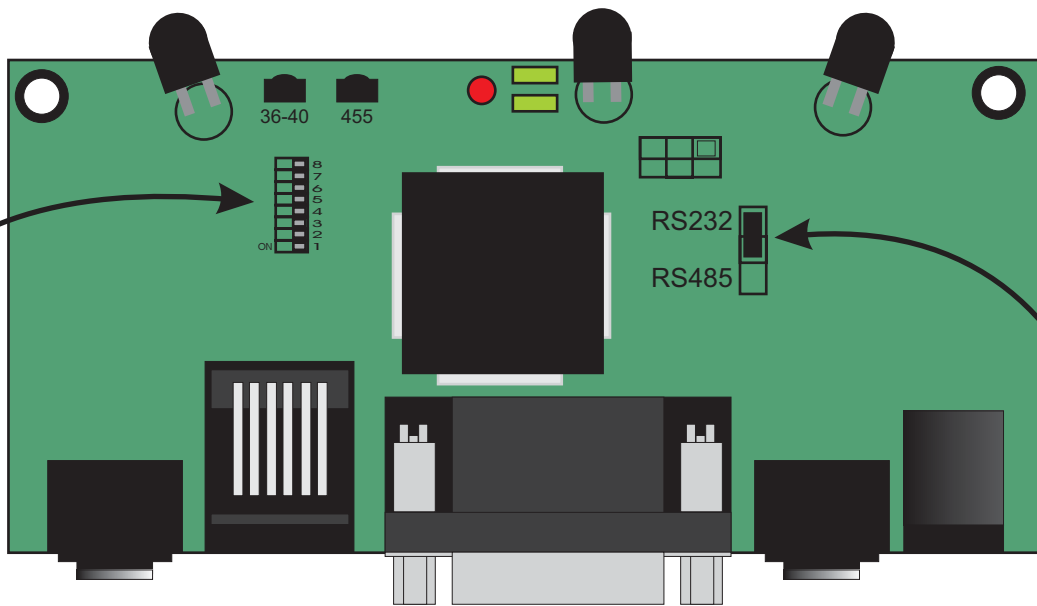


# LinTronic

<http://www.lintronic.dk>

## TEST PROCEDURE

Hardware Version 5



1. Remove Power from the product
2. Set the TableTop for RS232 communication
  - This is factory setting.
  - No need to open the device if not changed.
3. Set all switches OFF
  - This is factory setting.
  - No need to open the device if not changed.
4. Apply 9 - 12 volt DC Power to the product.

# LinTronic

<http://www.lintronic.dk>

## TEST PROCEDURE

Hardware Version 5



When power is applied, a ^ character, must be received by the SETUP program provided you have selected the right commport and baudrate/settings.



Click CONNECT and watch the SETUP program filling data as shown above, meaning your LinTronic product is responding correctly.

# LinTronic

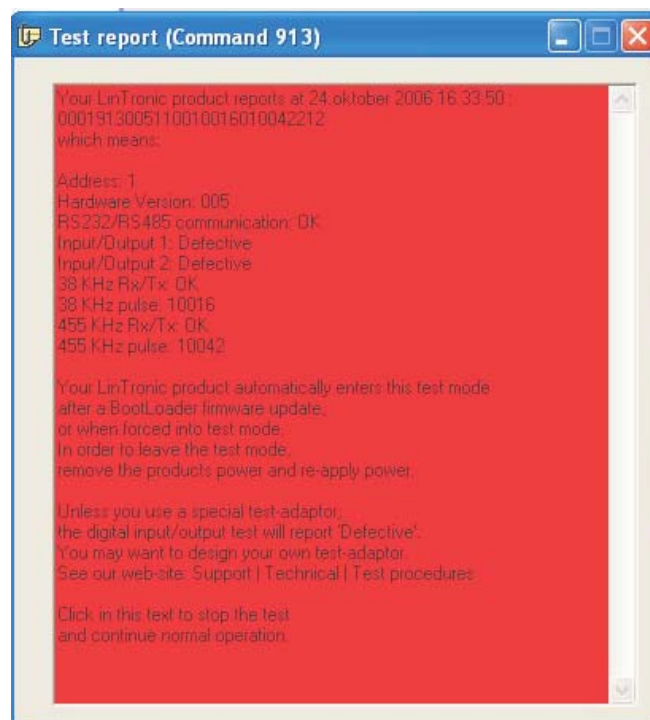
<http://www.lintronic.dk>

## TEST PROCEDURE

Hardware Version 5



Click StartTEST913 and wait a few seconds for the TestResult being updated on the screen,once a second.

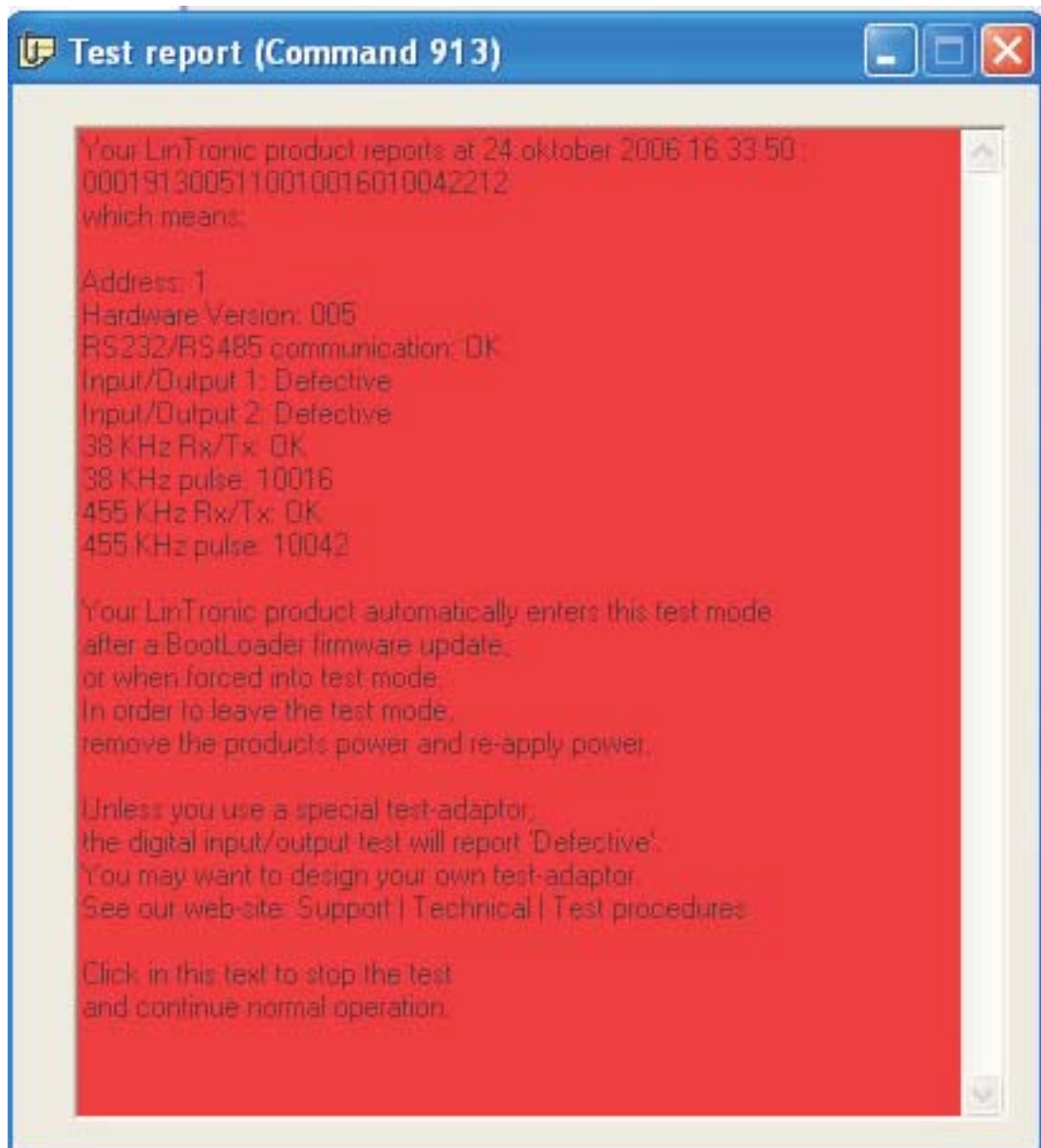


# LinTronic

<http://www.lintronic.dk>

## TEST PROCEDURE

Hardware Version 5



If you do not use a TEST-ADAPTOR then the Digital Inputs/Outputs will report error. If infrared test-signals from the box can be reflected on something nearby, then pulses of approximately 10000 micro-seconds must be received in both the 38 and 455 KHz range.

# LinTronic

<http://www.lintronic.dk>

## TEST PROCEDURE

Hardware Version 5



If you want to test whether the product sends out infrared test-signals, bring your mobile or digital camera close to the front and watch the 3 LED's.

Note that the IR diodes are transmitting in different angles, so if you watch from the front, the center LED will look brighter.

If you want to test the Low Power External IR Output, you can connect a normal visible LED to a mono 3.5 mm jack connector and insert it the External IR Output.

