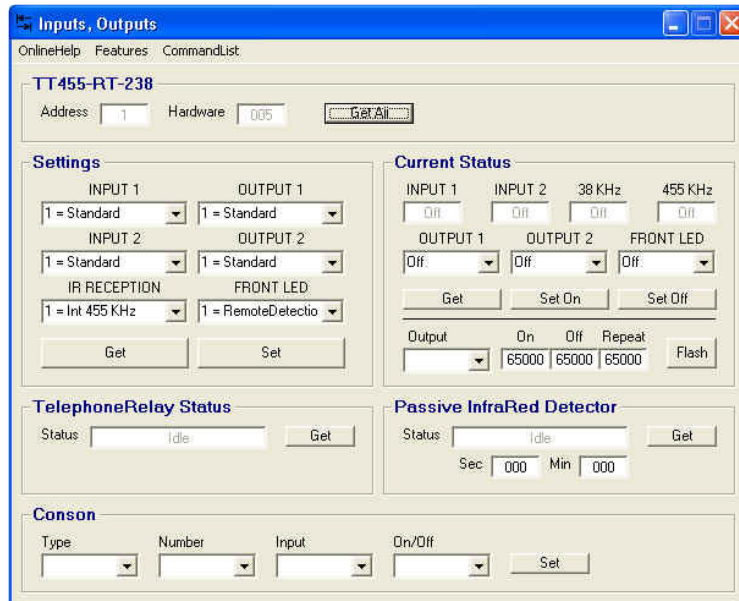


TT455-RT-238 Inputs and Outputs



Some of the shown [features](#) may not be active in your product, however, we offer customized software/features for your personal needs. Please observe that enabling some features might require us to disable other features or encoder/decoders due to timing and/or memory space requirements.

Settings, Inputs

Use the Get button to collect current settings. Use the Set button to change current settings.
 TableTop hardware version 5: 2 digital inputs
 TableTop hardware version 4: 1 digital input

Digital Inputs

- Off Turns the input off. [Command 908](#) may still request current InputStatus.
- Standard Reports the input On/Off status changes to the computer and upon request by [Command 908](#).
- Telephone Automatic Instructs the input to monitor the attached [TelephoneRelay AutoMute](#). [Command 910](#) sends the TelephoneLine conditions to the computer. The TelephoneLine status can be used as [Trigger](#).
- PIR Instructs the input to monitor the attached motion detector. [Command 911](#) sends the PIR conditions to the computer. The PIR status can be used as [Trigger](#).

IR Reception

- Off Turns IR reception off. Can be usefull if you only want to control the box from the 2-wire RS485 network or from the computer.
- 455 & 38 Commands the device to receive signals depending on connected IR receiver (internal or external) (Hardware 4 only)
- Int455 Commands the device to receive 455 KHz signals (Bang&Olufsen) from the internal receiver.
- Ext455 Commands the device to receive 455 KHz signals (Bang&Olufsen) from an external receiver.
- Int38 Commands the device to receive 38 KHz signals from the internal receiver.
- External Commands the device to receive 16 - 80 KHz from an external receiver.

Settings, Outputs

TableTop hardware version 5: 2 digital outputs
 TableTop hardware version 4: 1 digital output

Use the Get button to collect current settings. Use the Set button to change current settings.

Digital Outputs

- Off Turns the Output off. [Command 909](#) may still request current OutputStatus.
- Standard Computer can turn the Output [On](#), [Off](#), [Pulse](#).
- Remote Detection The Output will produce a short pulse when a remote control code is received or transmitted.
- IR edges The Output follows the edges of the selected InfraRed receiver.
- Conson Digital Output 1 controls a Conson Light System. See Conson below.
- BeoSystem Digital Output 2 controls a BeoSystem. See ApplicationNote - [click](#)

LED - Built-in TableTop LED is Red

| | |
|------------------|--|
| Off | Turns the LED off. Command 909 may still request current OutputStatus. |
| Remote Detection | The LED will produce a short blink when a remote control code is received or transmitted. |
| IR edges | The LED follows the edges of the selected InfraRed receiver(s). Can be used to detect for infrared noise in the actual environment. Can also be used to detect whether a remote control is transmitting at the selected frequency range. Depending on the timelength of the pulses in the actual code set, the LED blinking might hard to see. |
| Input x | The LED follows the On/Off status of Input x. If Input x is activated (grounded) the LED is On. You can use this setting to monitor open/closed status of garagedoor, window, door, etc. |
| Output x | The LED follows the On/Off status of Output x. If Output x is On the LED is On. You can use this setting to monitor On/Off status of an output controlling relays for Power, Light, etc. |

Status, Inputs/Outputs - On/Off

TableTop hardware version 5: 2 digital outputs
TableTop hardware version 4: 1 digital output

Use the Get button to collect current settings. Use the SetOn/SetOff buttons to change current settings.

| | |
|----------|---|
| Input x | On means that the Input is grounded. |
| Output x | On means that the Output is active. To control the Output select required On/Off and click the related SetOn or SetOff. NOTE: When you click SetOn only the Outputs marked as On will set to On. The Outputs marked as Off will not be effected. When you click SetOff only the Outputs marked as Off will set to Off. The Outputs marked as On will not be effected. |
| 38 KHz | This status is a momentary reading. If you constantly read it as On, it means the receiver is On all the time. Under normal conditions this should read Off most of the time. |
| 455 KHz | This status is a momentary reading. If you constantly read it as On, it means the receiver is On all the time. This might occur if you have an external receiver connected as their Automatic Gain Control (AGC) pick up a lot of background noise. Under normal conditions this should read Off most of the time. |
| Flash | Can be used to create a programmable series of pulses on the LED or Output x. The Green LED's in the TableTop cannot be controlled by users. On - A value between 0 and 65000 (each unit is 4 ms) Off - A value between 0 and 65000 (each unit is 4 ms) Repeat - On - A value between 0 and 65000 Note: If you set Repeat to 65000, the 1 sec pulse ½ sec pause will run for ever. |
| | Example 1: You want to produce a series of flashes on the red LED in the TableTop. The LED should be on for 1 second, then off for ½ second, and you want this to run for 1 minute. On = 250 (250 * 4 ms = 1 second) Off = 125 (125 * 4 ms = ½ second) Repeat = 40 (4x * 1½ second = 1 minute) |
| | Example 2: You want to produce a one second pulse on output 1 in order to control an electrical lock. On = 250 Off = 0 Repeat = 1 (if you set Repeat to 0, it will never turn off) |

Passiv Infrared detector, PIR

TableTop hardware version 5: Enabled in default software
TableTop hardware version 4: Not enabled in default software

Use the Get button to collect current settings.

[Command 911](#) sends the PIR conditions Idle or Active to the computer.

If you have a PIR motion detector connected to Input x, you will see the PIR status change in the Status field when motion is detected and when no motion is detected for a specific time.

If Active, the "Sec" and "Min" show the time since the PIR was last activated.
If Idle, the "Sec" and "Min" show the time the PIR detector has been idle.

You can use the PIR signals to [Trigger Actions](#).

TelephoneRelay Status

TableTop hardware version 5: Enabled in default software
TableTop hardware version 4: Not enabled in default software

Use the Get button to collect current settings.

[Command 910](#) sends the TelephoneLine status to the computer.

If you have a [TelephoneRelay AutoMute](#) connected to Input x, you will see the line status change in the Status field if the phone rings, if you answer the phone, if you make an outgoing call or the ringing stops.

You can use the Telephone signals to [Trigger Actions](#).