

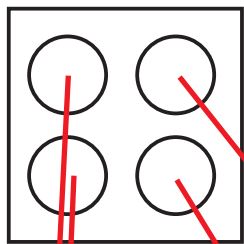
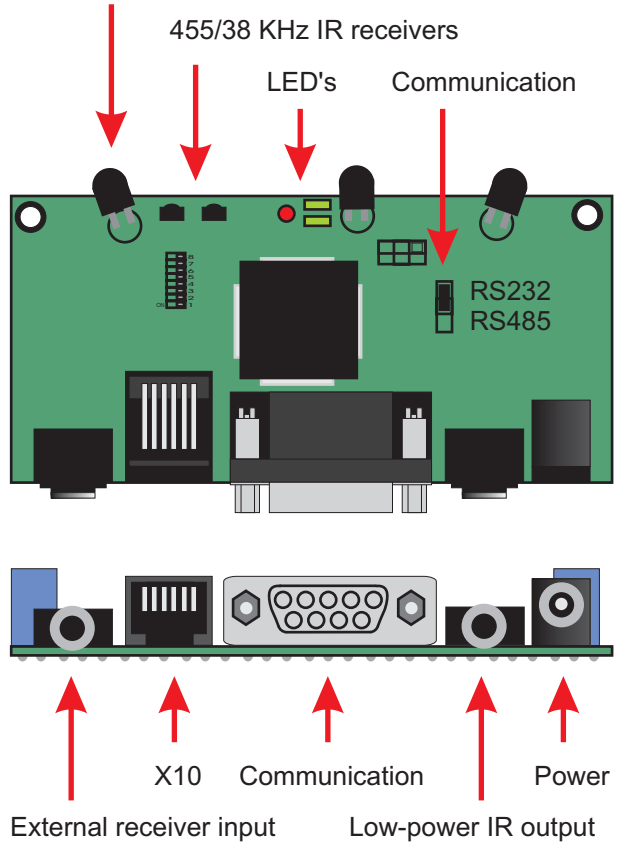
LinTronic

TableTop series



<http://www.lintronic.dk>

Wide-angle long-range high-power IR output

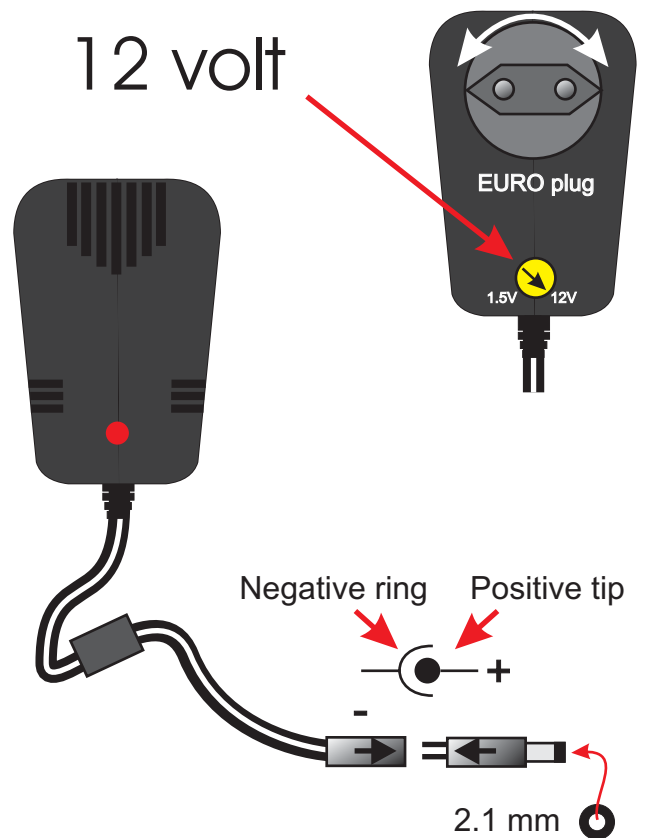


Rubberfeet
for the bottom



220 vac 50 Hz

12 volt



LinTronic

[LinTronic Discussion Forum](#) - [BeoWorld NewsLetter](#) - [RSS](#)

LinTronic now being used in
40 countries in 6 continents



Visit our web-site: 'Get started'

'Get started' will tell you how to:

- Register and update your 'User Profile' for later service and firmware updates
- Download and install PC based 'Configurator' program (if needed for your device)

To operate 'Configurator' on a Mac, use the 'Virtual PC' program.

The Configurator includes:

- **Configuration** ... of your LinTronic product (if needed)
- **BootLoader** ... allows you to update firmware of your product or load firmware for another typenumber for test/evaluation. Example: All Hardware 5 based units, will work on firmware for a Hardware 5: TT455-RT-238, TT455-RX-002, TT455-RT-003, etc.
- **DataSampler** ... TT455-RT-238 allows you to control devices both by IR and/or RS232/RS485 commands. Use DataSampler to test or copy RS232/RS485 commands to/from devices like projectors, screens, tuners, etc. holding an RS232/RS485 port. We can embed RS232/RS485 commands in LinTronic products and even make customized firmware for you.

