

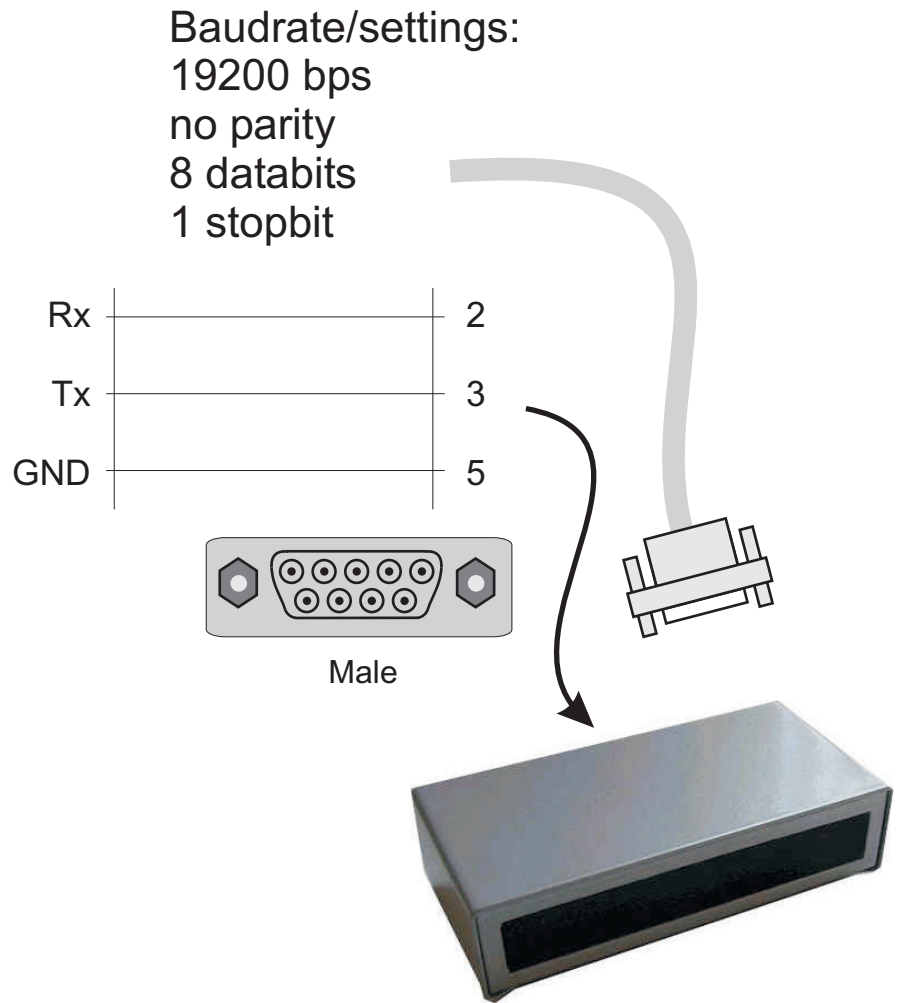
LinTronic

<http://www.lintronic.dk>

DALI COMMANDS

For example HELVAR



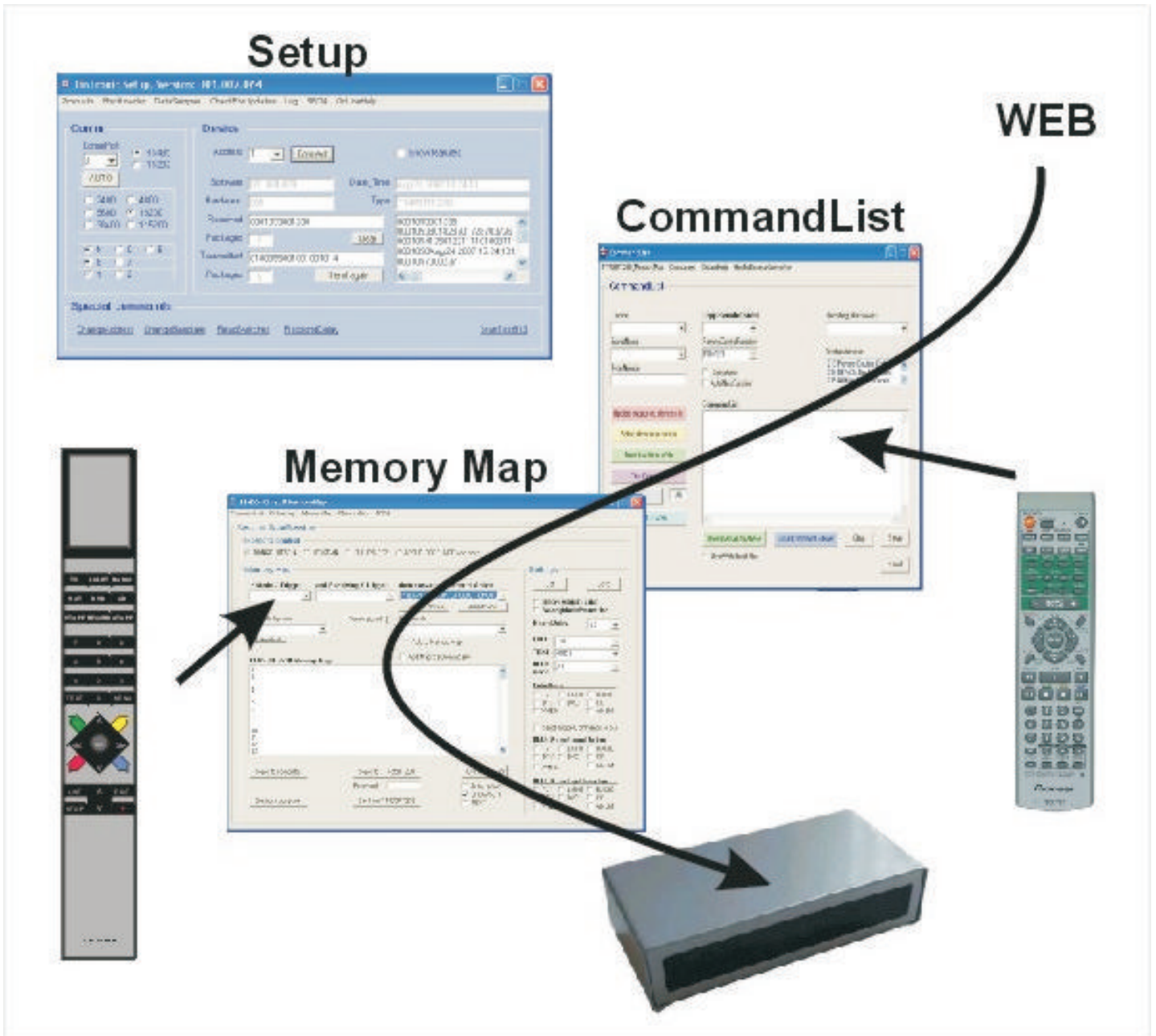


LinTonic's TT455-RT-238 Signal Converter may work as a standalone unit, configured to send optional RS232 commands to a device, when triggered by an infrared remote control, digital switches, contacts, relays, X10 signals, etc.

The triggers to control the TT455-RT-238, and the related commands to be executed or transmitted, are configured in our PC based Configurator program.

TT455-RT-238 can be re-configured at any given time.

LinTronic offer customized firmware to suite your needs.



The commands to be executed are downloaded or created in the CommandList section of the Configurator, and the relation between the Trigger (for example a Bang&Olufsen remote control) and the commands, are configured in the Memory Map of the Configurator.

The customized configuration is saved in the TT455-RT-238 and the TT455-RT-238 may now be disconnected from the PC.

If the TT455-RT-238 is instructed to send out IR commands when triggered, it will work as a standalone unit. All that is required is a power supply.

Or you may connect the TT455-RT-238 to a computer or controller, enabling the TT455-RT-238 to control by for example RS232 or RS485.

A basic knowledge of how the TT455-RT-238 works is required. See our web-site: [Support | GetStarted](#)

DALI COMMANDS

The information (commands) controlling the TT455-RT-238 to send out DALI commands, consist of 8 pcs. 3-digit numbers. These commands can be created in the CommandList section of the TT455-RT-238's Configurator (see next page).

RS232 control of DALI offers broadcast and individual control of groups, address and levels.

Structure:

769 aaa bbb ccc ddd eee fff rrr = command

769	= Dynamic RS232 command
aaa	= Manufacturer (002 = DALI)
bbb	= Number of Bytes (typically 2-4)
ccc	= Type Range 000 - 255)
ddd	= Data 1 Range 000 - 255
eee	= Data 2 Range 000 - 255
fff	= Data 3 Range 000 - 255
rrr	= Repeat (fixed 001)

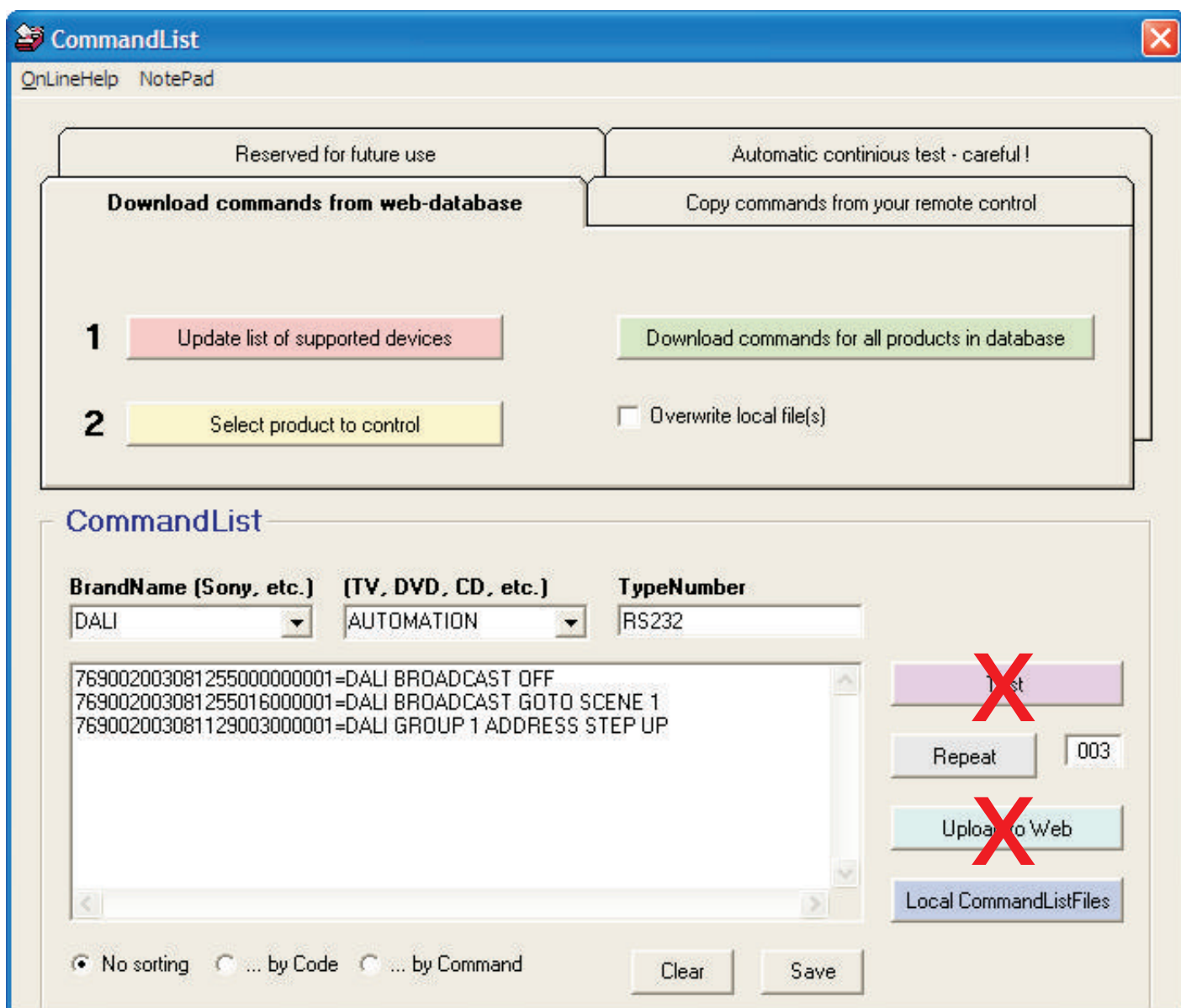
Example of commands below.

Please refer to your DALI documentation to find more commands or contact LinTronic.
See last page in this document to learn how you convert HEX numbers to Decimal (ASCII).

Dali, Broadcast Off = 03, 51, FF, 00 (hex, in decimal = 3, 81, 255, 0)
769002003081255000000001=Dali, Broadcast Off

Dali, Broadcast Goto Scene 1 = 03, 51, FF, 10 (hex, in decimal = 3, 81, 255, 16)
769002003081255016000001=Dali, Broadcast Goto Scene 1

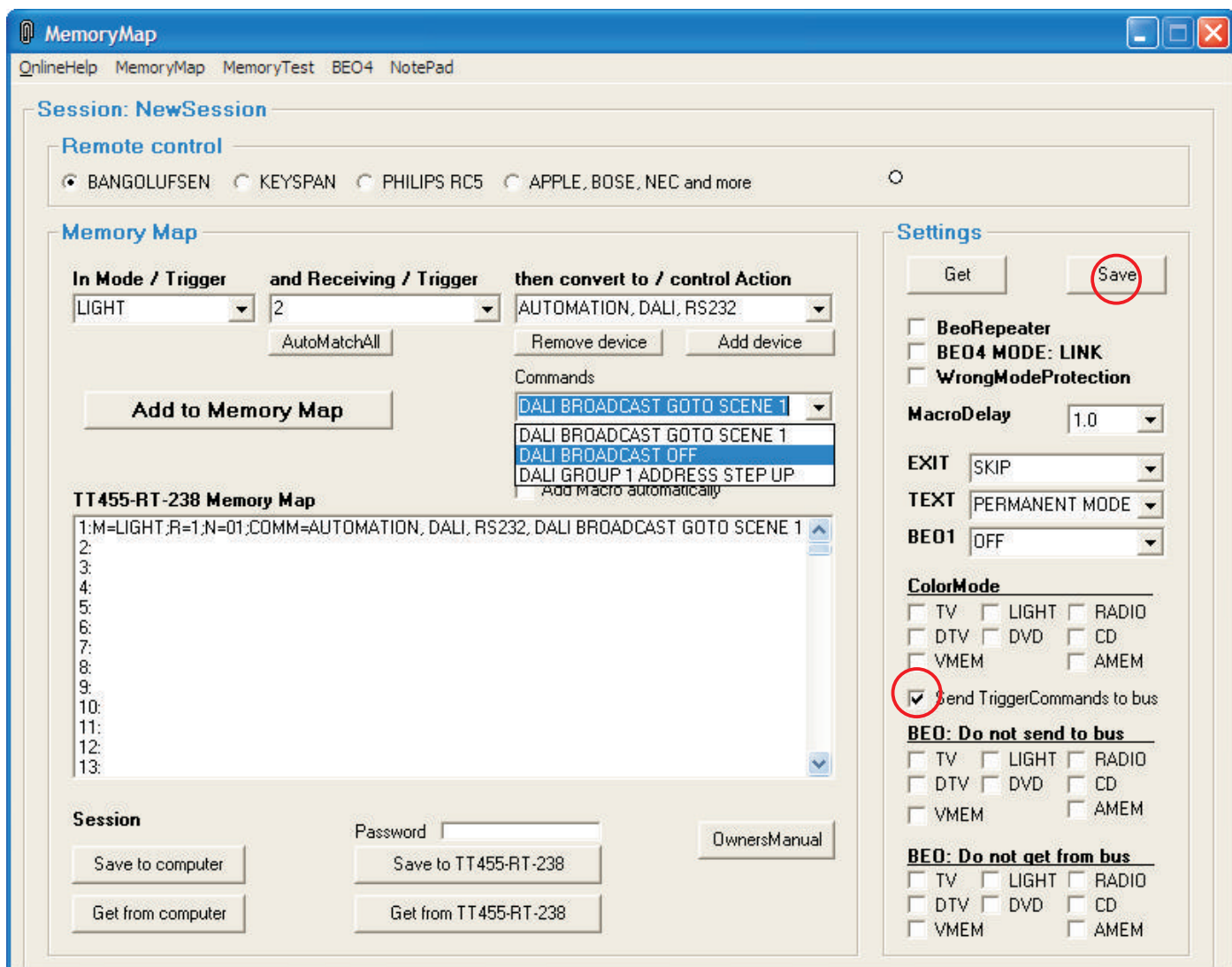
Dali, Group 1 address, Step up = 03, 51, 81, 03 (hex, in decimal = 3, 81, 129, 3)
769002003081129003000001=Dali, Group 1 address, Step up



Simply manually enter the commands as plain text and save when done.
You can always open the Local CommandsListFiles and add/delete/change commands.

Due to the dynamic nature of the DALI commands, please do NOT upload your customized commands to our web-database. Your commands will most likely not work for other customers requiring other groups, addresses or levels.

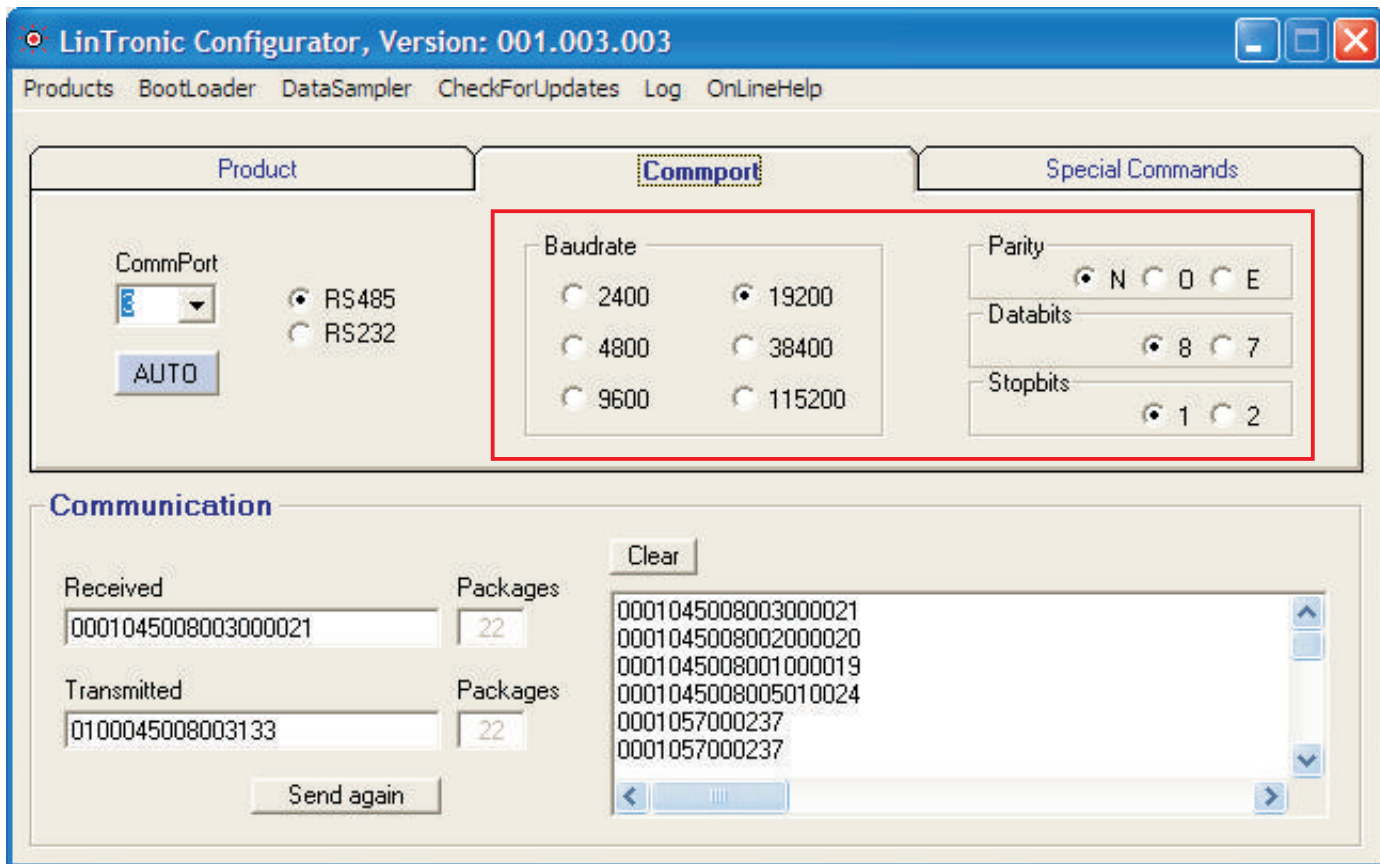
No need to TEST commands.
It will not work as the TT455-RT-238 must be connected to a DALI system.



When you save a Memory Map to the TT455-RT-238, holding an RS232 command (732 static or 769 dynamic), then the Configurator will uncheck "Send trigger to Bus" and Save settings.

This will prevent the TT455-RT-238 from sending a command of the detected remote control command, so we do not confuse the receiving RS232 device.

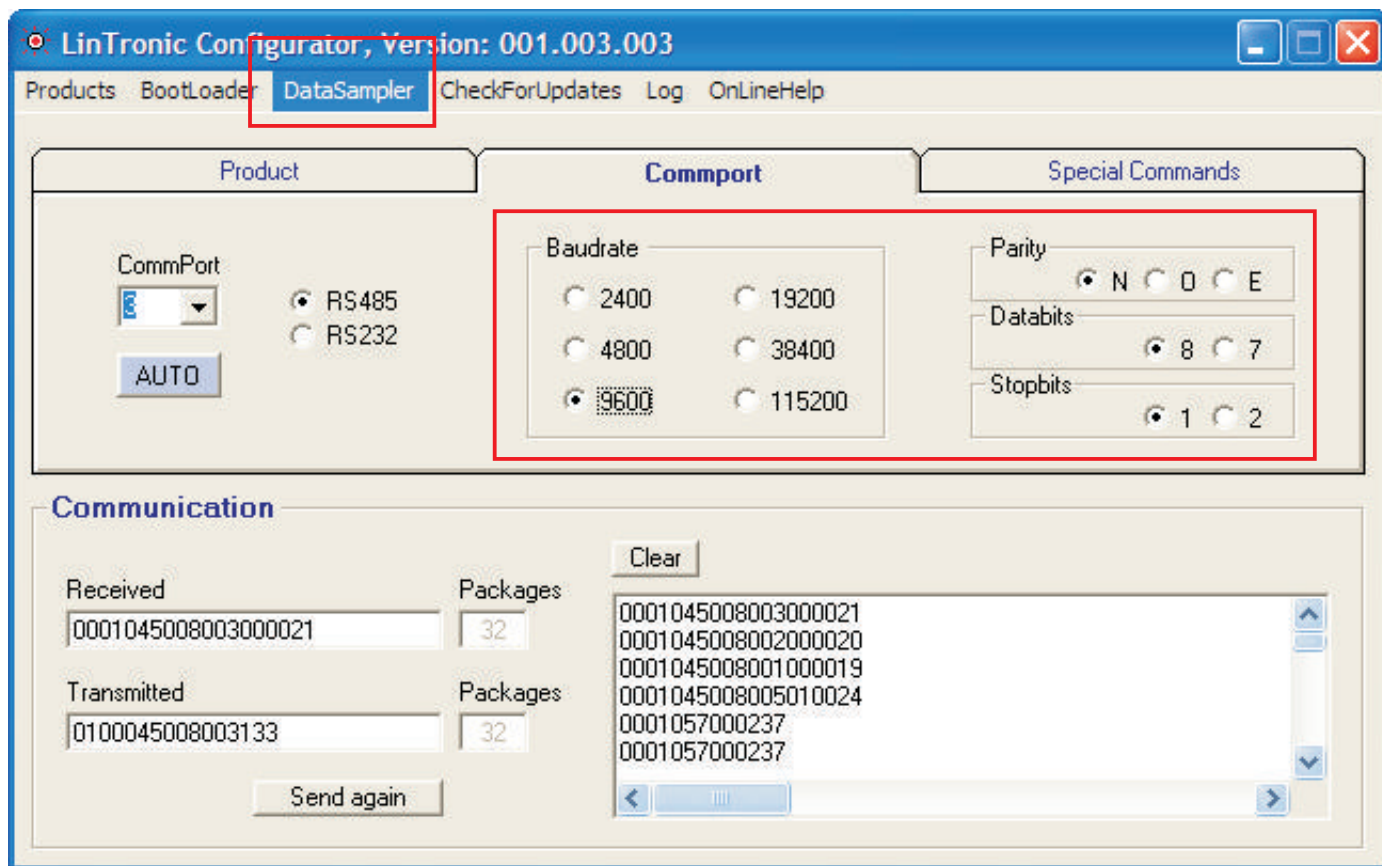
You can mix InfraRed and RS232 commands in your Memory Map as you want.



It is NOT necessary to change the default baudrate/settings of the TT455-RT-238.

The TT455-RT-238 will continue working with the Configurator on 19200 bps, n,8,1 although your system might require something else.

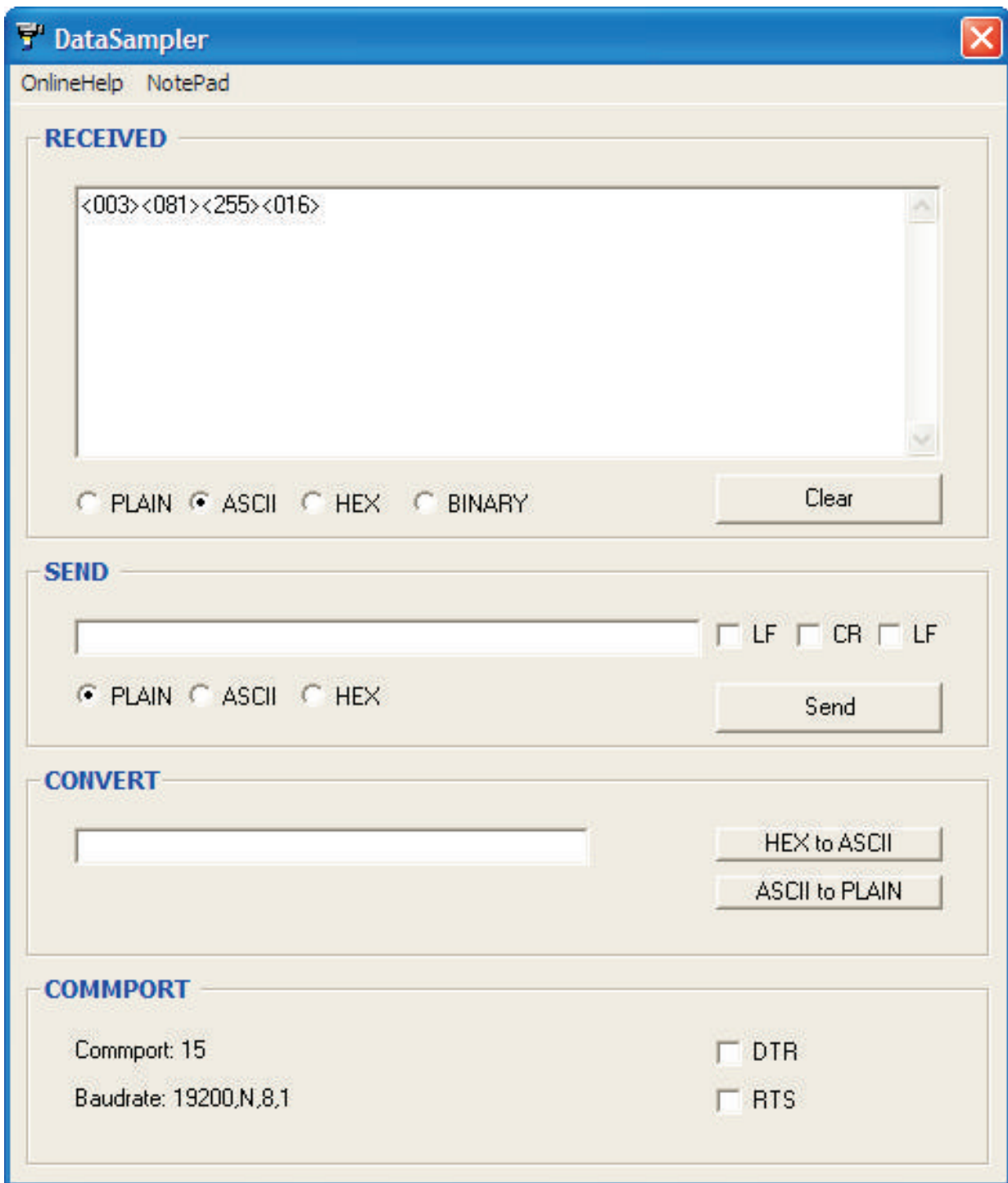
The firmware is designed to automatically send out the commands at the correct baudrate/settings as required by the system to be controlled.



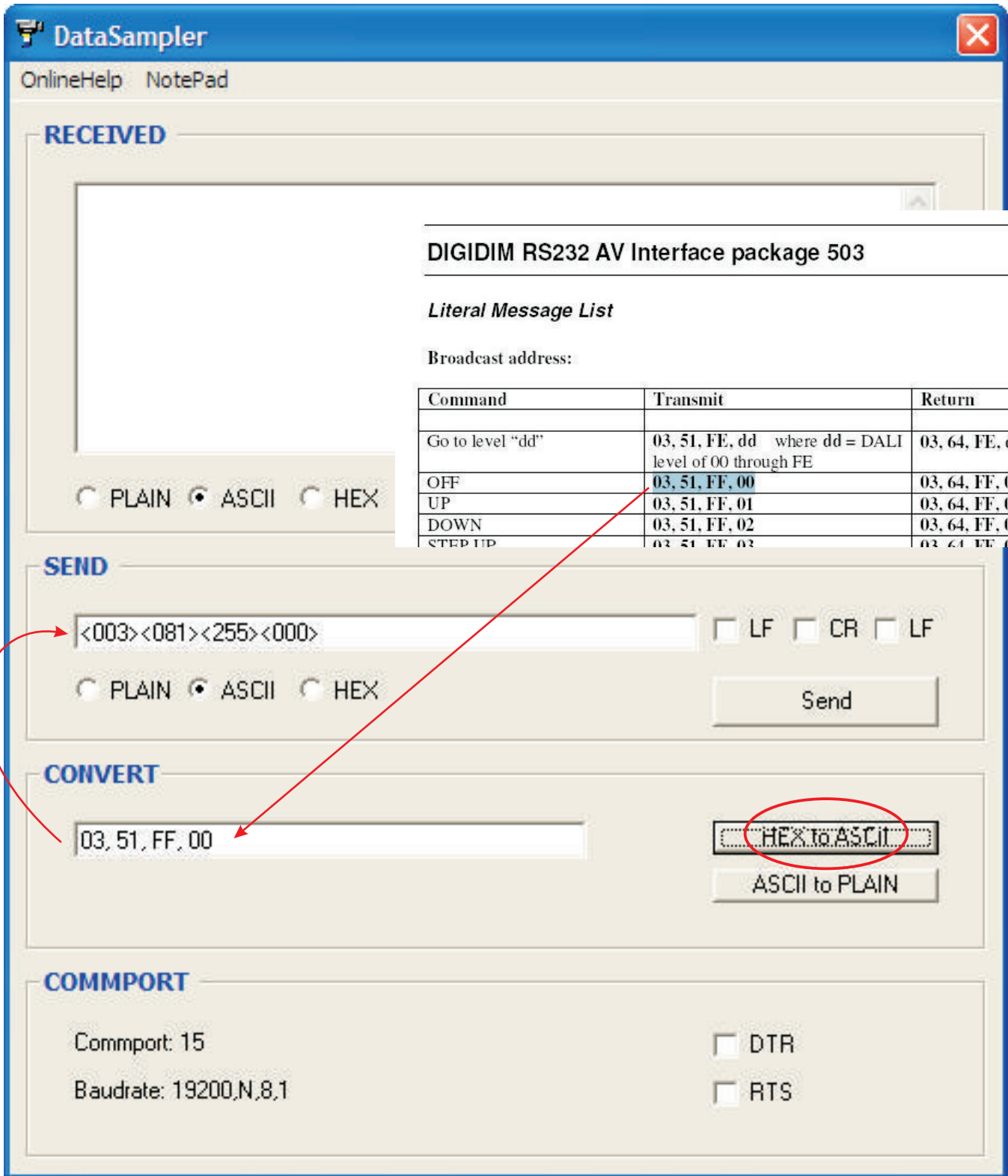
However, if you want to use our DataSampler ... see next page ... to verify/test the commands being send by the TT455-RT-238, then you MUST set the expected baudrate and settings.

Then remove power of the TT455-RT-238 ... wait 5 seconds ... and reapply power, which will remove the internal ram-based information of "Send Trigger to Bus" in the TT455-RT-238.

Then click DataSampler in the menu and goto next page.



Then activate the remote control to trigger the TT455-RT-238 to send out the RS232 commands. View them in PLAIN or ASCII format as you wish.



To convert the DALI HEX command into Decimal (ASCII), insert the HEX numbers in the CONVERT text field and click "HEX TO ASCII".

When using the ASCII numbers in the CommandList text file, remove the "<" and ">" signs.