

# Appendix A

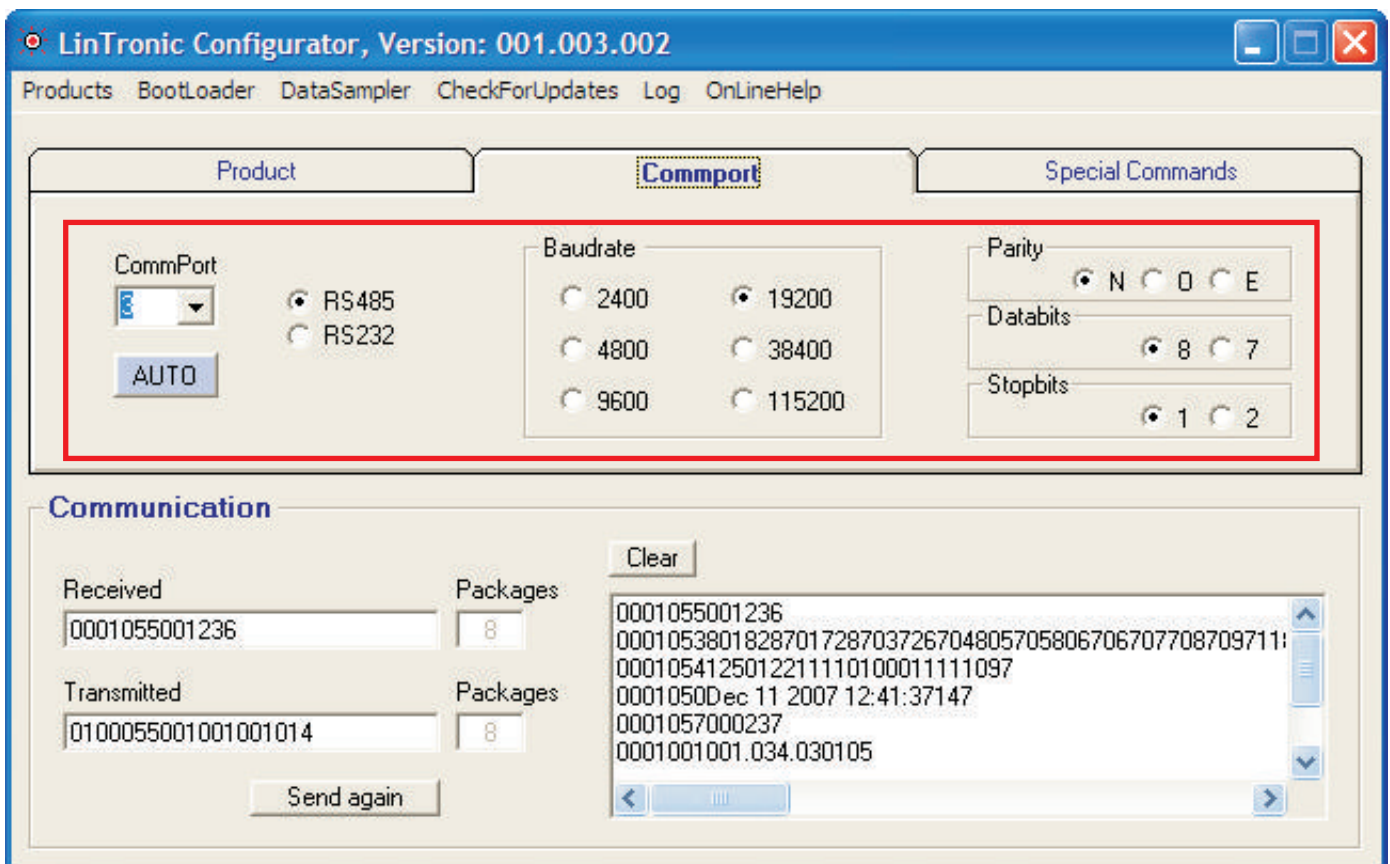


Commport settings



Commport communication speed and protocol settings, can be set in the **Commport** section of the Configuration program.

Configuration program can be downloaded from our web-site's SUPPORT section.



# Appendix B

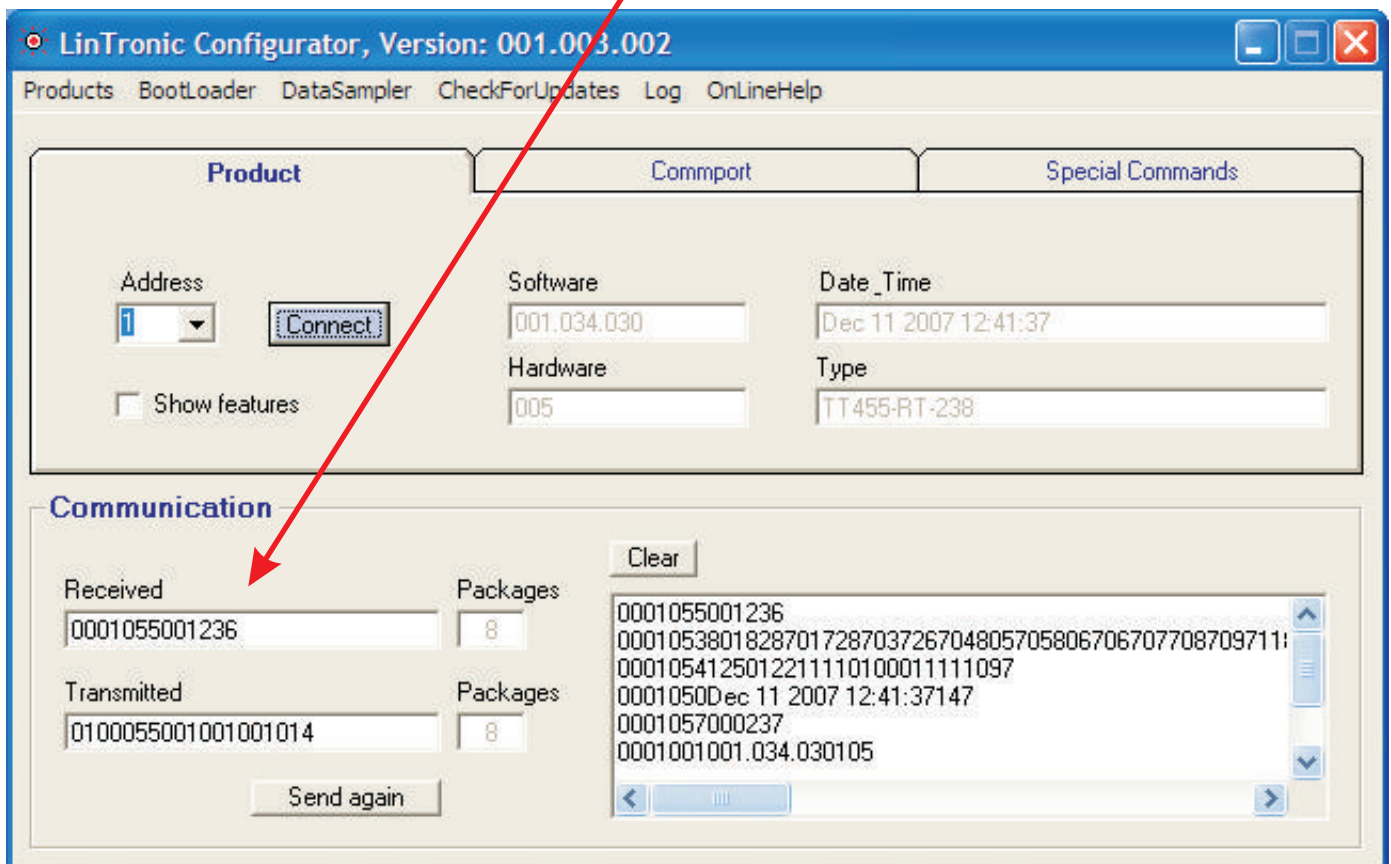


Computer receives command



If you connect a LinTronic product to our Configuration program ... can be downloaded from our website's SUPPORT section ... then you will see any received command being shown in the RECEIVED text field.

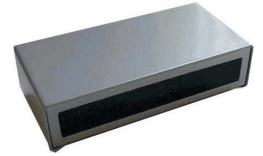
NOTE: Start Of Telegram (SOT <) and End Of Telegram (EOT >) have both been stripped off.



# Appendix C



Computer transmits command



If you connect a LinTronic product to our Configuration program ... can be downloaded from our web-site's SUPPORT section ... then you will see any transmitted command being shown in the TRANSMITTED text field.

NOTE: Start Of Telegram (SOT <) and End Of Telegram (EOT >) have both been stripped off.

