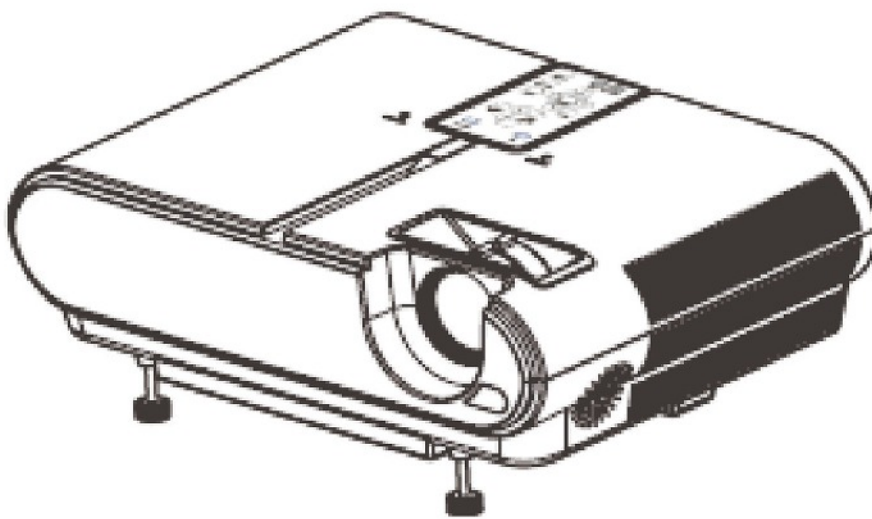
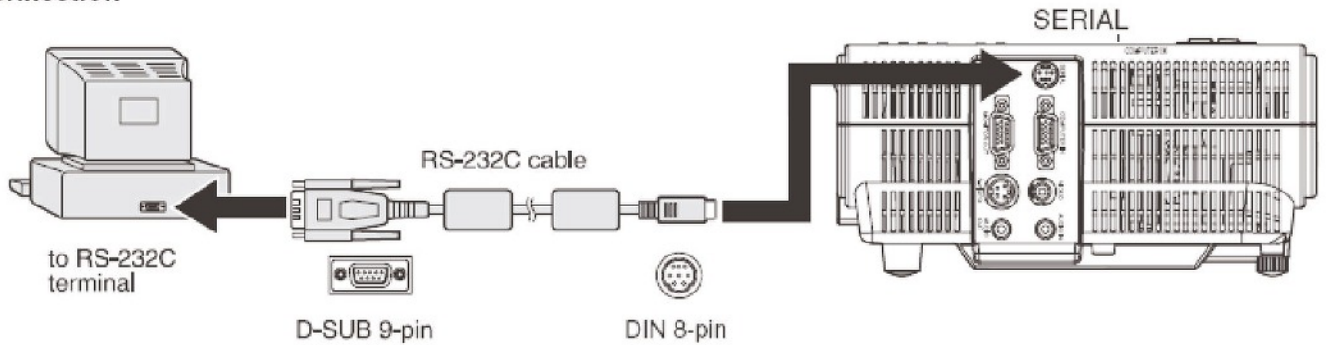


LinTronic

MITSUBISHI PROJECTORS



Connection



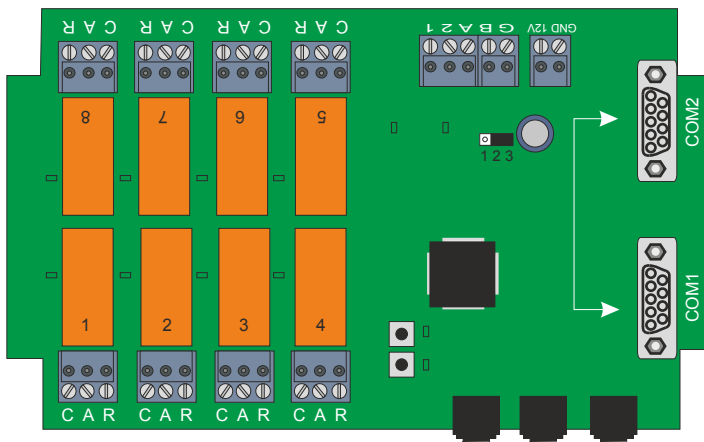
Important:

- Make sure that your computer and projector are turned off before connection.
- Boot up the computer first, and then plug the power cord of the projector.
(If you do not follow this instruction, the Comport may not function.)
- RS232C cables may be necessary when you control the projector. Contact your dealer for details.

1) Interface

PROTOCOL	RS-232C
BAUD RATE	9600 [bps]
DATA LENGTH	8 [bits]
PARITY BIT	NONE
STOP BIT	1 [bit]
FLOW CONTROL	NONE

This projector uses RXD, TXD and GND lines for RS-232C control.
For RS-232C cable, the reverse type cable should be used.

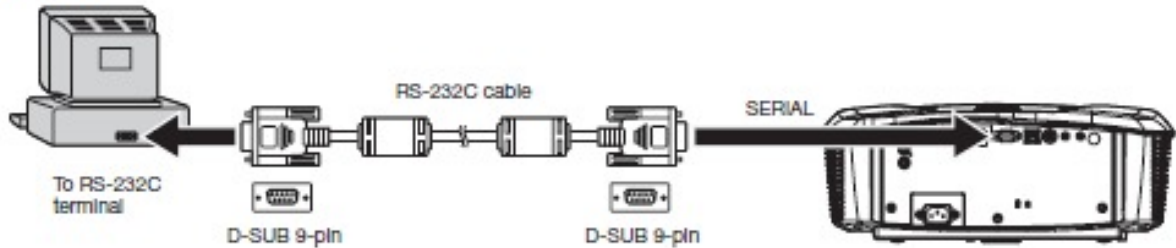


DCE (Male connector)

- Pin 2 - Receive data (In)
- Pin 3 - Transmit data (Out)
- Pin 5 - Ground



Connection



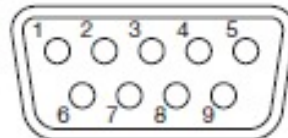
Important:

- Connect the computer with the projector on a one-to-one basis.
- Make sure that your computer and projector are turned off before connection.
- Boot up the computer first, and then plug the power cord of the projector.
(If you do not follow this instruction, the Com port may not function.)
- Adapters may be necessary depending on the PC connected to this projector. Contact your dealer for details.

1. Interface

1.1 Pin assignment of SERIAL terminal (D-SUB 9-pin)

Pin	Description
1	NC
2	RXD
3	TXD
4	NC
5	GND
6	NC
7	RTS
8	CTS
9	NC



1.2 Communications format

PROTOCOL	RS-232C
BAUD RATE	9600 [bps]
DATA LENGTH	8 [bits]
PARITY BIT	NONE
STOP BIT	1 [bit]
FLOW CONTROL	NONE

This projector uses RXD, TXD and GND lines for RS-232C control.

TT455-RT-238

PROJECTOR

