

# LinTronic

## Logitech



# Logitech

Logitech Harmony Remote Software (7.7.0)

Harmony Welcome Michael Lindgaard  
Model Number: 900

Logout Select Language

Device Setup

➔ From the list, add each device you want to control.

Device	Manufacturer	Model	Example
Home Appliance	Lintronic		TT455-RT-238

Add another device

Tip Center Support a?

A device is a component such as a TV, AV receiver, or DVD Player.

**How do I find my model number?**  
Most components place the model number on a label located on the front, back, or bottom of the device. Select "Not Listed" to enter a manufacturer name not found in the list. Use this Device Worksheet to help you

Logitech

---

Logitech Harmony Remote Software (7.7.0)

Harmony Welcome Michael Lindgaard  
Model Number: 900

Logout Select Language

Device Setup

➔ From the list, add each device you want to control.

Device	Manufacturer	Model	Example
Light Controller	Bang & Olufsen		LC 1

Add another device

Tip Center Support a?

A device is a component such as a TV, AV receiver, or DVD Player.

**How do I find my model number?**  
Most components place the model number on a label located on the front, back, or bottom of the device. Select "Not Listed" to enter a manufacturer name not found in the list. Use this Device Worksheet to help you collect your device information and get more tips.

[Device Worksheet](#)

View Tutorial

Logitech

Terms of Use  
© Copyright 2010 Logitech or its licensors. All rights reserved.

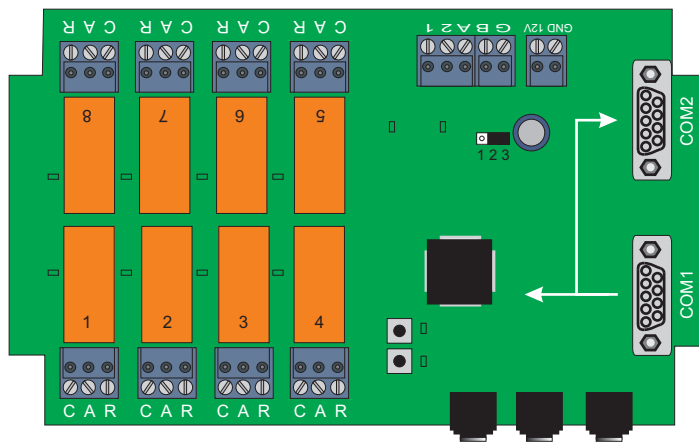
< PREVIOUS CANCEL NEXT >

# We make things happen

## LIGHT SYSTEM



Curtains



Harmony 900 remote

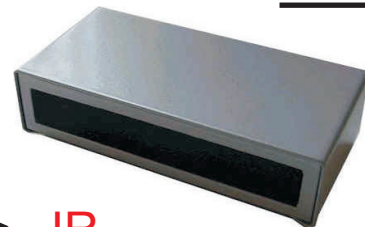
Direct IR control of A/V devices in the particular room

RF control of curtains and light



Standard firmware

RS232



TT455-RT-238

# Triggering the TT455-RT-238

We have developed a special codeset for learnable remotes:  
[http://www.lintronic.dk/CodeSet\\_745.pdf](http://www.lintronic.dk/CodeSet_745.pdf)

This codeset has also been accepted by Logitech and is soon found in the Logitech library under "Home Appliance".

Also the TT455-RT-238 can be triggered from a Logitech remote, by B&O LIGHT codes.

