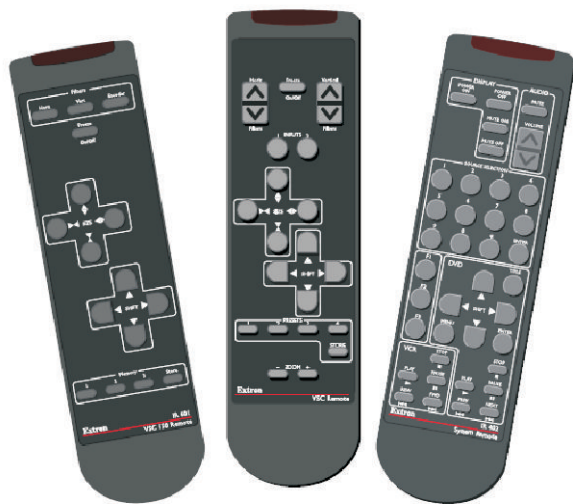


LinTronic

<http://www.lintronic.dk>

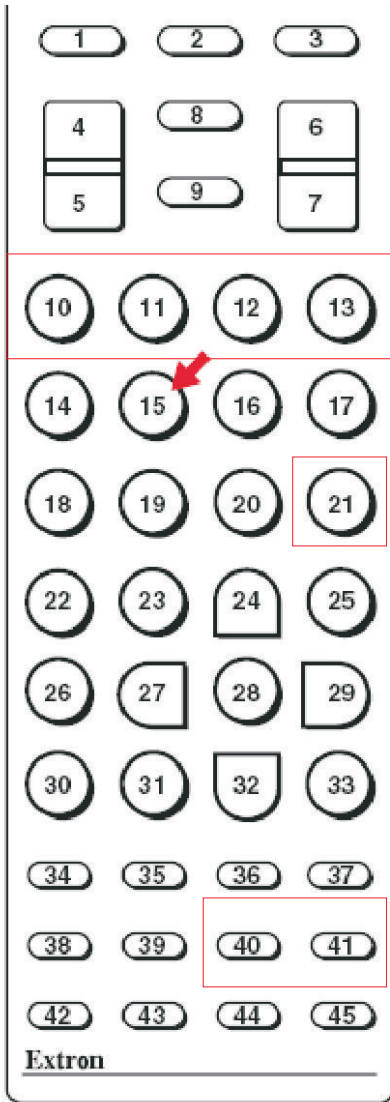
Extron switchers



MAV 44 / 48 / 84 / 88 Series
Matrix Switchers

EXTRON SWITCHERS

(See left for button position)



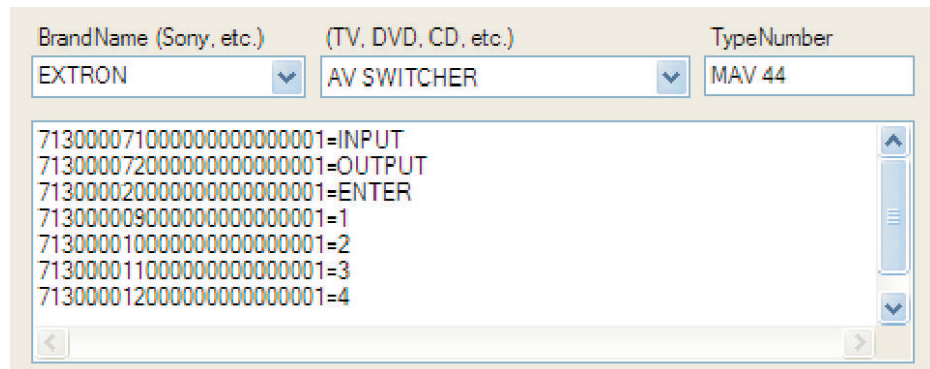
Button #	Hex Code	Button #	Hex Code
1	00	25	18
2	01	26	19
3	02	27	1A
4	03	28	1B
5	04	29	1C
6	05	30	1D
7	06	31	1E
8	07	32	1F
9	08	33	40
10	09	34	41
11	0A	35	42
12	0B	36	43
13	0C	37	44
14	0D	38	45
15	0E	39	46
16	0F	40	47
17	10	41	48
18	11	42	49
19	12	43	4A
20	13	44	4B
21	14	45	4C
22	15		
23	16		
24	17		



Example:

In order to tie input 1 to output 4, use this sequence:

INPUT
1
OUTPUT
4
ENTER



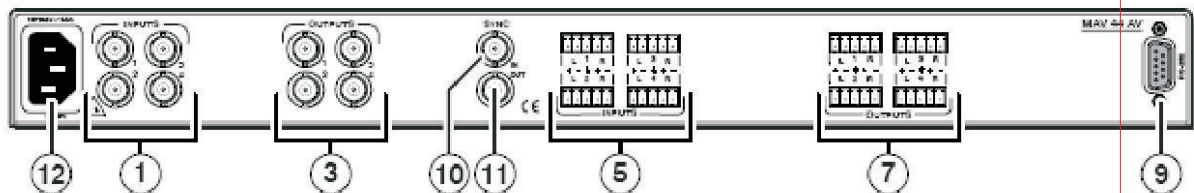
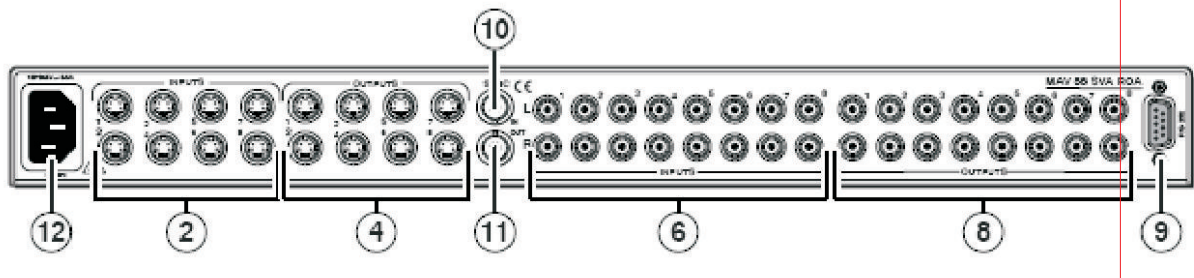
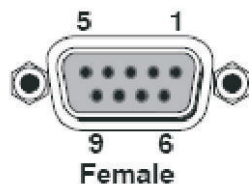


Figure 2-2 — MAV 44 AV composite video switcher with audio



Remote connection 9600,n,8,1

- ⑨ RS-232 connector — Connect a host device, such as a computer or control system, to the switcher via this 9-pin D connector (figure 2-7) for remote control of the switcher.



Pin	RS-232	Function
1	—	Not used
2	TX	Transmit data
3	RX	Receive data
4	—	Not used
5	Gnd	Signal ground
6	—	Not used
7	—	Not used
8	—	Not used
9	—	Hardwired IR input