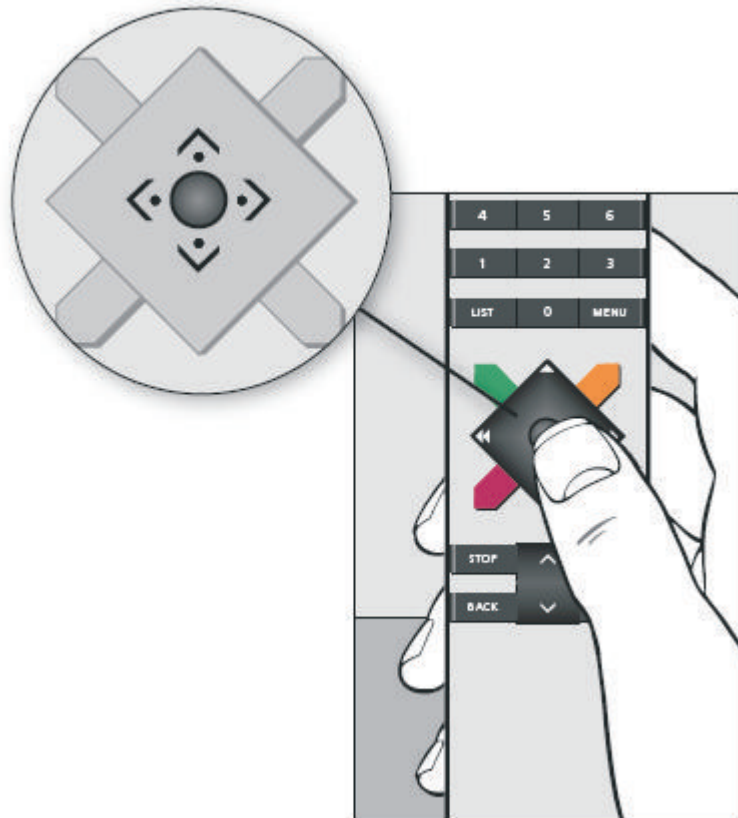
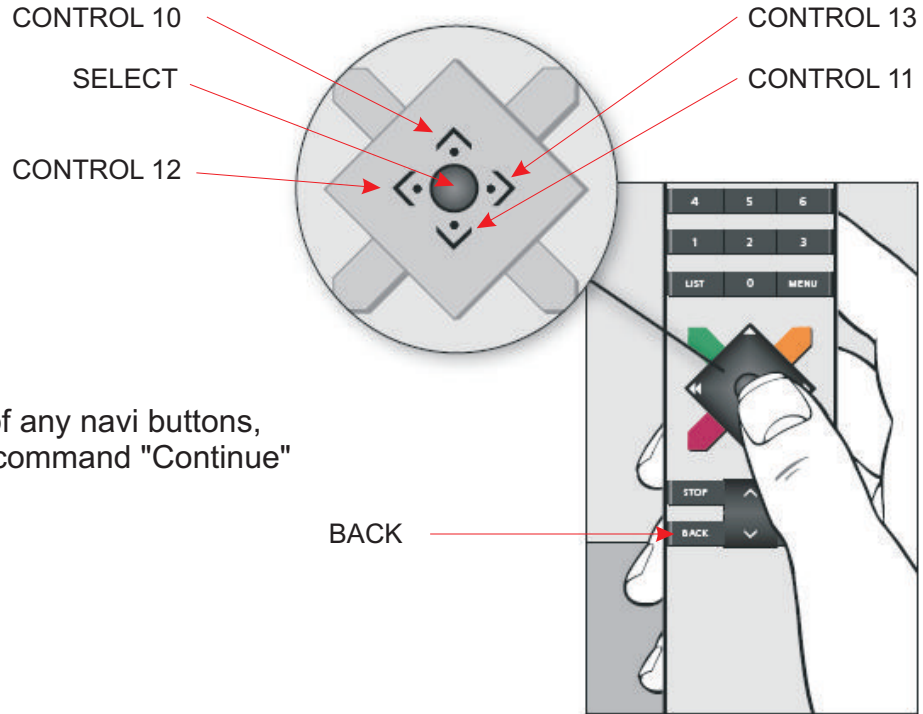


# LinTronic

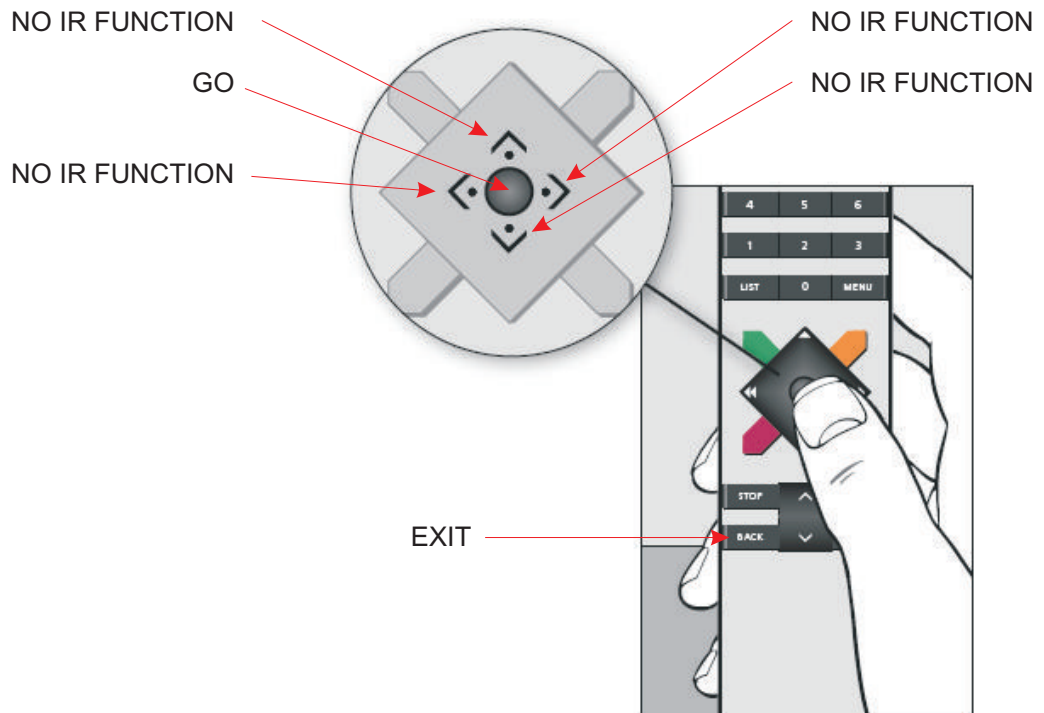
## BEO4 NAVI, type 1710



## Navi buttons in Mode 1 and Mode 3



## Navi buttons in Mode 2 (default)



With the BEO4, type 1710 (at LinTronic we call it BEO4 NAVI), Bang&Olufsen have introduced:

- Relocation of Play, Stop, Text
- Exit is now called Back (LinTronic have already used it like that for a long time)
- Record is now found under List
- Navigation buttons in Mode 2 and 3 (in Mode 1 no codes are transmitted)
- Center button (select) - in Mode 1 same code as Play

By using some of the commands introduced in the BEO5 (initially introduced in the BEO5 to work with the LinTronic RELAY 208), B&O use some of these commands in the BEO4 1710 for new functions:

New functions in LIGHT mode:

- Morning, Outdoor, General, Sleep, Relax, Music, Evening, TV view, Home, Leaving

New sub-mode under TV mode:

- CONTROL

New functions in CONTROL mode:

- On-Off1 to On\_Off5, Windows1 to Window5, Curtain1- to Curtain5

--

Some considerations:

Since most of the new functions are in fact old and well-known friends (codes already recognized as FUNCTION\_xx and CONTROL\_x, and since we want the Configurator to work with all B&O remotes including the BEO5 without too much confusion, we for now have decided to not put specific labels on the FUNCTION/CONTROL commands in Memory Map, but for now we will work with the codes as they are known by the BEO4/BEO5 and later we might improve the reading/understanding of the codes:

LIGHT MORNING = FUNCTION\_1  
LIGHT LEAVING = FUNCTION\_2  
LIGHT HOME = FUNCTION\_3  
LIGHT TV\_VIEW = FUNCTION\_4  
LIGHT EVENING = FUNCTION\_5  
LIGHT MUSIC = FUNCTION\_6  
LIGHT RELAX = FUNCTION\_7  
LIGHT SLEEP = FUNCTION\_8  
LIGHT GENERAL = FUNCTION\_9  
LIGHT OUTDOOR = FUNCTION\_10

CONTROL WINDOW1 = FUNCTION\_1  
CONTROL WINDOW2 = FUNCTION\_2  
CONTROL WINDOW3 = FUNCTION\_3  
CONTROL WINDOW4 = FUNCTION\_4  
CONTROL WINDOW5 = FUNCTION\_5

CONTROL CURTAIN1 = FUNCTION\_11  
CONTROL CURTAIN2 = FUNCTION\_12  
CONTROL CURTAIN3 = FUNCTION\_13  
CONTROL CURTAIN4 = FUNCTION\_14  
CONTROL CURTAIN5 = FUNCTION\_15

CONTROL ON\_OFF1 = FUNCTION\_21  
CONTROL ON\_OFF2 = FUNCTION\_22  
CONTROL ON\_OFF3 = FUNCTION\_23  
CONTROL ON\_OFF4 = FUNCTION\_24  
CONTROL ON\_OFF5 = FUNCTION\_25

## MODE 1 and MODE 3

NAVI UP = CONTROL 10  
NAVI DOWN = CONTROL 11  
NAVI LEFT = CONTROL 12  
NAVI RIGHT = CONTROL 13  
NAVI CENTER = SELECT  
BACK = BACK

A long hold of any NAVI buttons, will result in command "Continue".

A long hold of PLAY, will result in command "Continue".

A long hold of the BACK, will result in an "EXIT".

## MODE 2 (default)

NAVI UP = NO IR FUNCTION  
NAVI DOWN = NO IR FUNCTION  
NAVI LEFT = NO IR FUNCTION  
NAVI RIGHT = NO IR FUNCTION  
NAVI CENTER = GO  
BACK = EXIT

Please refer to the B&O manuals on how to add the new functions:  
<http://www.bang-olufsen.com/guide/Beo4>

When you add new LIGHT functions, these will be found under LIGHT LIST.

When you add new CONTROL functions, these will be found under TV LIST:  
- Find CONTROL and click center button to enter CONTROL MODE.  
- Then activate LIST to find new CONTROL functions.

**IMPORTANT:** Make sure you first add CONTROL in TV mode.

Please observe that CONTROL is a temporary mode (like LIGHT). The BEO will go back to TV mode after a 25 seconds timeout - or if you hit Back.